

530000 531000 532000



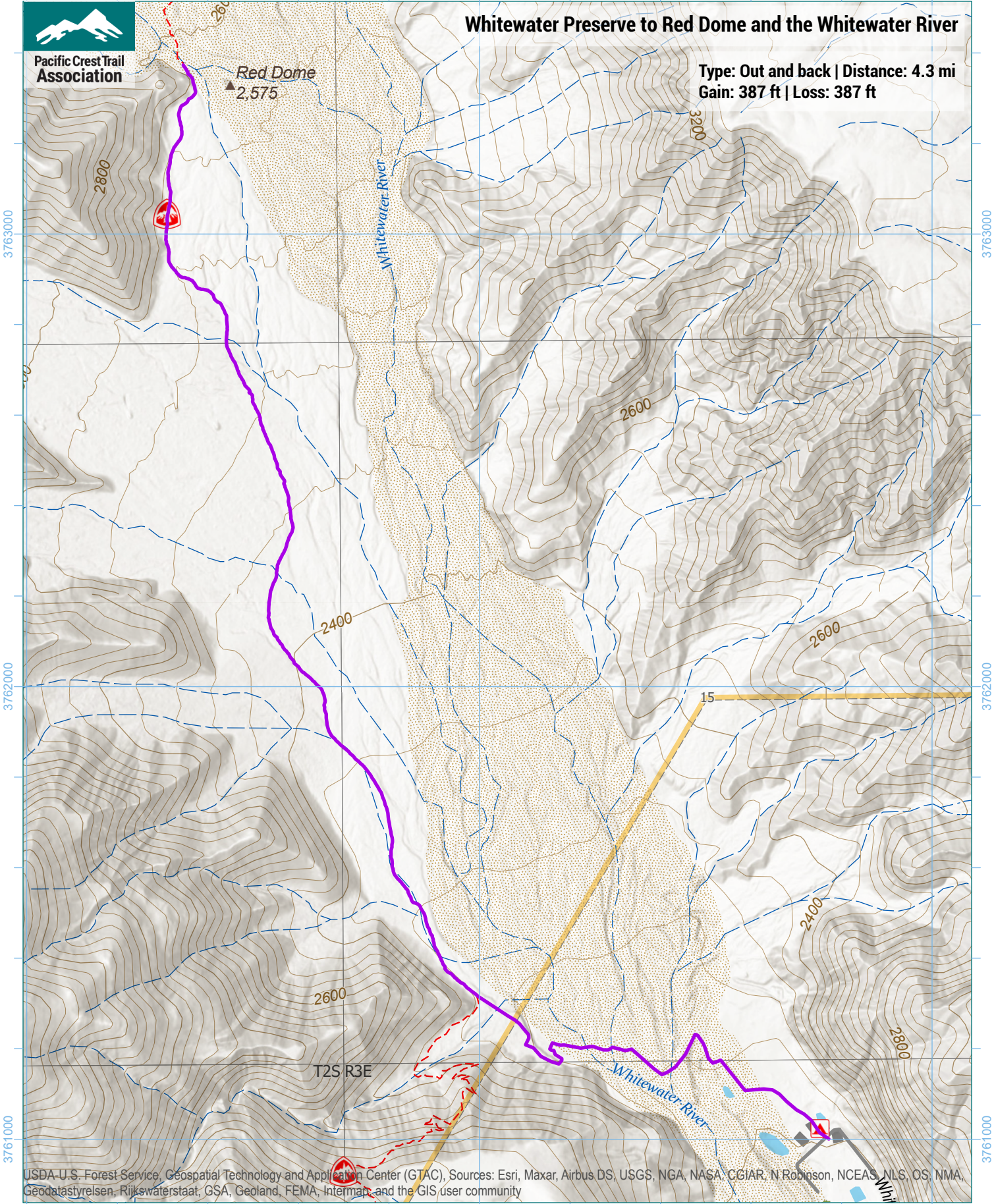
Pacific Crest Trail Association

# Whitewater Preserve to Red Dome and the Whitewater River

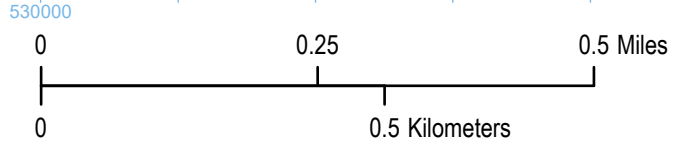
Type: Out and back | Distance: 4.3 mi  
Gain: 387 ft | Loss: 387 ft

Red Dome  
▲ 2,575

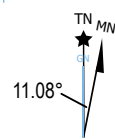
Whitewater River



USDA-U.S. Forest Service, Geospatial Technology and Application Center (GTAC), Sources: Esri, Maxar, Airbus DS, USGS, NGA, NASA, CGIAR, N Robinson, NCEAS, NLS, OS, NMA, Geodatastyrelsen, Rijkswaterstaat, GSA, Geoland, FEMA, Intermap, and the GIS user community



1 inch equals 917 feet  
1:11,000  
WGS 1984 UTM Zone 11N



Trip data by PCTA  
Basemap by US Forest Service  
Contour interval: 40ft

530000 531000 532000

3761000

3762000

3763000

3761000

3762000

3763000